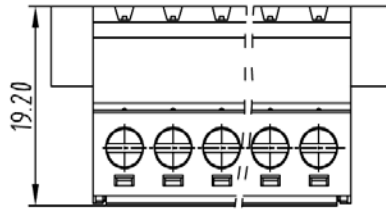
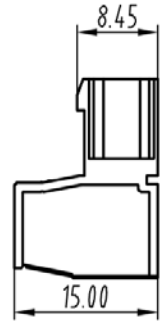
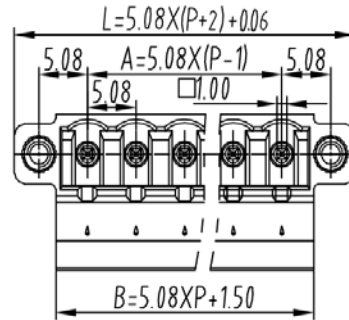
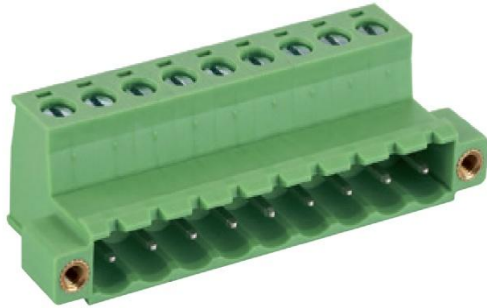


PCB Connector — TLP series ( Male Connector ) — TLPHSW-304



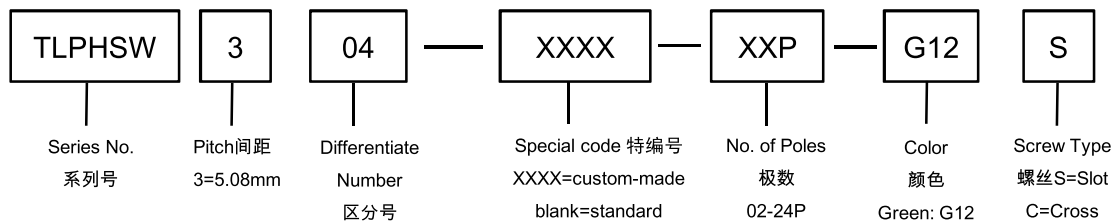
■ 图示(Pic. shown) : TLPHSW-304-9P-G12S

General.	PCB Connector Rated : 320V,20A , 2.5mm <sup>2</sup>
	Single row , 5.08mm pitch , 02-24 Pole
	Wiring orientation: 180°(wire to plug-in )
	Screw clamp unit: M3.0, 0.6Nm Max

认证 ( Approval ) :

技术参数 Technical Data	UL standard			IEC standard		
UL应用组别(UL Application group)	UL Application group			IEC过电压别/污染等级(IEC overvoltage category /pollution degree)		
IEC过电压别/污染等级(IEC overvoltage category /pollution degree)	B	C	D	III / 3	III / 2	II / 2
额定电压(Rated voltage)	300V	--	300V	--	320V	--
额定电流(Rated current)	16A	--	10A	--	20A	--
额定连接容量(Rated connection capacity)	26-12AWG Sol&Str			0.2~2.5mm <sup>2</sup> Sol&Str,4.0mm <sup>2</sup> Sol Max		
绝缘材料(Insulation Material)	PA66 UL94 V-0					
电流承载部件材料和镀层( Material & Plating of Current carrier )	Copper alloy , Tin plated					
接线弹片材料(Material of Clamp spring )	--					
绝缘电阻(Insulation Resistance)	500MΩ or more at DC500V					
耐电压(1分钟)(Withstanding Voltage/1Min)	2200V					
额定冲击电压(Rated surge voltage)	--					
接线螺丝(Wire clamp unit Screw) , 最大扭矩( torque Max. )	M3.0 , 0.6Nm Max					
固定螺母(Mounting Screw nut) , 扭矩(torque)	M2.5 , 0.25Nm Max					
剥线长度(Wire stripping length)	7.0mm					
使用温度(Operating temperature)	-40°C up to +105°C					
焊接方式(Soldering recommend)	--					

■ 订购方式(How to order)



Web:www.china-tianli.com TEL:+86-574-6347-9600,6389-6436 Mail : sale@china-tianli.cn  
地址:中国浙江省宁波杭州湾新区庵东工业园区纬三路138号  
ADD : 138 , Weisan Rd.,Andong Development Zone, Hangzhou Bay Area, Ningbo, Zhejiang, China

插头 ( Female Connector ) — single row



P/N : TLPSW-300V  
Wiring orientation :  
180°(wire to plug-in )  
Rated : 250V,15A , 2.5mm<sup>2</sup>  
Screw clamp unit:M3.0,0.5Nm Max  
With screw flange



P/N : TLPSW-300R  
Wiring orientation :  
90°(wire to plug-in )  
Rated : 250V,15A , 2.5mm<sup>2</sup>  
Screw clamp unit:M2.5,0.4Nm Max  
With screw flange



P/N : TLPSW-300RL  
Wiring orientation :  
270°(wire to plug-in )  
Rated : 250V,15A , 2.5mm<sup>2</sup>  
Screw clamp unit:M2.5,0.4Nm Max  
With screw flange



P/N : TLPS-302V  
Wiring orientation :  
180°(wire to plug-in )  
Rated : 320V,12A , 2.5mm<sup>2</sup>  
Spring clamp unit.  
With screw flange



P/N : TLPSW-301  
Wiring orientation :  
180°(wire to plug-in )  
Rated : 320V,20A , 2.5mm<sup>2</sup>  
Screw clamp unit:M2.5,0.5Nm Max  
With screw flange